

Carbondale Community Profile

Carbondale is the trade, tourism and educational center of Southern Illinois. Center of area transportation with; Bus, Rail and Air. Bordered by a national forest, a national wildlife refuge, a state park, and home of Southern Illinois University, the community serves as the host and focal point for many of the region's business & recreation activities.

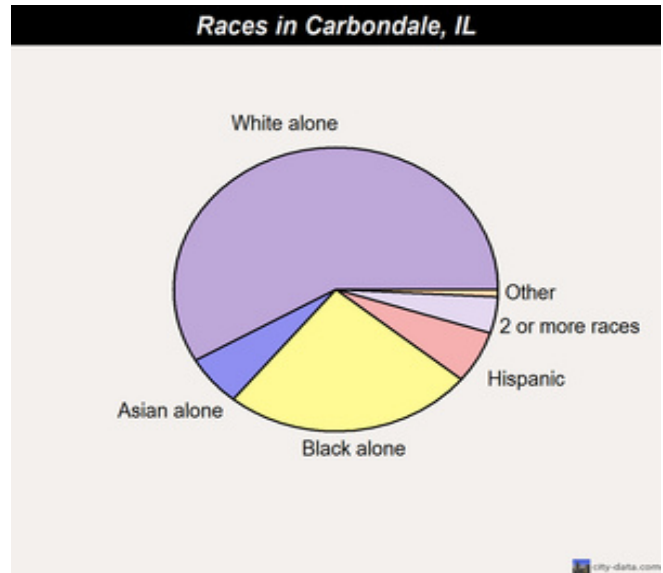
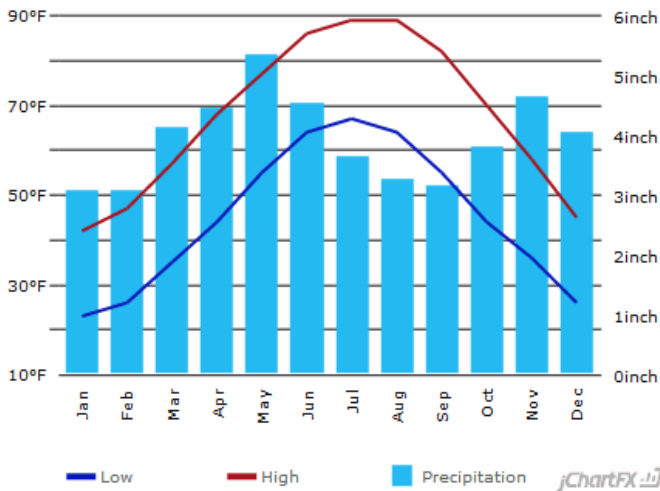
Platted November 27, 1852
Incorporated August 23, 1873
Council / Manager form of government
Home Rule municipality
Area in square miles 17.70
Number of full time equivalent employees 265.47

POPULATION

	City	County	State
1970	22,816	55,008	11,110,285
1980	26,414	61,522	11,428,518
1990	27,033	61,067	11,430,602
2000	20,681	59,612	12,419,293
2010	25,902	60,218	12,830,632
2016*	26,305	60,512	12,815,607

	City of Carbondale	State of Illinois
Caucasian	57.7%	6.18%
Black/African American	23.3%	16.9%
American Indian/Alaska Native	0.3%	0.1%
Asian/Asian American	6.2%	5.2%
Native Hawaiian/Pacific Islander	0.3%	0.1%
Hispanic or Latino	5.8%	9.1%

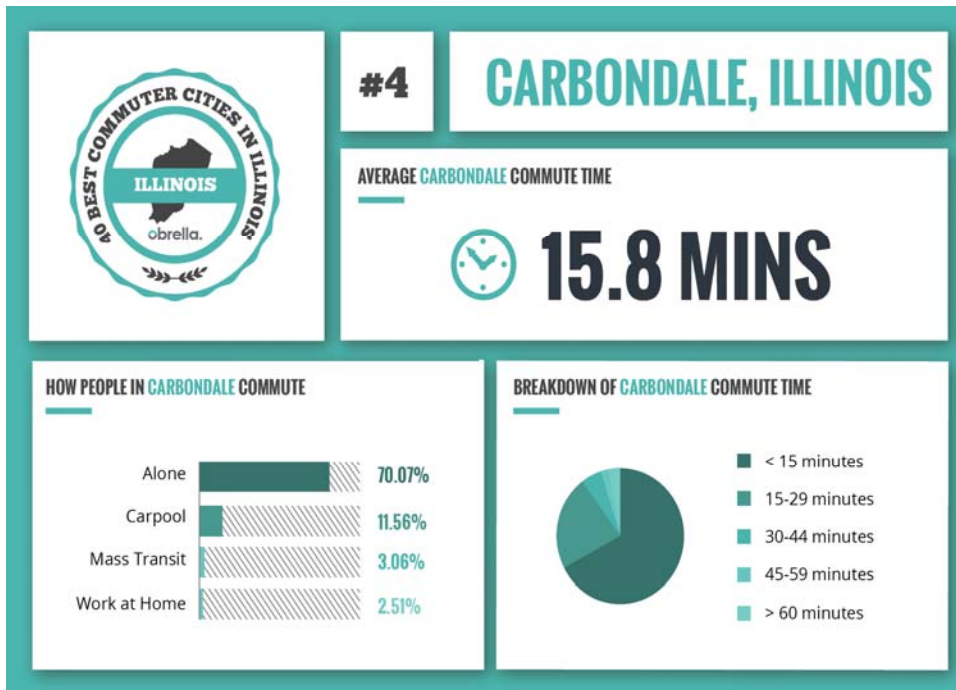
Carbondale Climate Graph - Illinois Climate Chart



The Jackson County-Murphysboro-Carbondale Enterprise Zone (EZ) was a driving force for economic development during FY 2017, the enterprise zone ISSUED certificates for 19 projects with a total construction value of \$12,425,333.

The Carbondale Small Business Development Center at SIU Last year (2016) advised 375 clients, provided 2,023 hours of consulting, held 13 business management training sessions, Instructed 211 training session attendees, Helped 25 entrepreneurs create new businesses, Assisted 12 business expand, Helped create 174 jobs and retain 314 jobs, Assisted businesses export products outside of the US, increasing sales by \$36,018,084, Leveraged \$711,050 in owner investment to \$3,060,000 of stock investment and \$10,309,000 in loans.

Carbondale Community Profile



HIGHWAY MILEAGE

Carbondale to:

Atlanta - 447
Chicago-331
Cincinnati-332
Dallas-648
Detroit-551
Denver-972
Indianapolis-264
Kansas City-356
Los Angeles-1,919
Memphis-213
Milwaukee-423
Minneapolis-662
Nashville-200
New Orleans-608
New York-1,007
Orlando - 884
Seattle-2,200
Savannah - 694
St. Louis-103
Washington DC – 820

Health Care

Memorial Hospital of Carbondale - Memorial Hospital of Carbondale is the flagship hospital for SIH and regional referral center for the 16 county southern Illinois region. Memorial paves the way to bring big city medicine home. Physicians in nearly 40 different specialties practice here, bringing expertise and new procedures, but successfully tailoring them to the particular needs of a rural setting.

- 140-bed tertiary care hospital
- Southern Illinois' largest and most spacious birthing center with Level II Plus Special Care Nursery
- Only dedicated pediatric unit in the region
- The core hospital for SIH's comprehensive, regional heart program, Prairie Heart Institute.
- High level surgical capabilities including daVinci technology
- Affiliated with SIU School of Medicine through its Family Practice Residency Program
- Neuroscience program including neurosurgery and the region's only Primary Stroke Center
- Accredited by the Commission on Cancer for comprehensive cancer treatment

Carbondale Community Profile

EDUCATIONAL FACILITIES

	<i>Number</i>	<i>Teachers</i>	<i>Enrollment</i>	<i>Grades</i>
Carbondale District #95 Comprised of:				
Middle School	--	--	437	6-8
Lewis School	--	--	271	4-5
Thomas Elementary School	--	--	328	2-3
Parrish Elementary School	--	--	<u>337</u>	pre K, K-1
Total for District #95	105		1,373	

CCHS Carbondale High School Dist.#165 1 74 1,050 9 -12

Outlying Districts Which Feed into CCHS:

Unity Point Grade School	1	55	700	K-8
Giant City Grade School	1	15	237	K-8
Desoto Grade School	1	15	194	K-8

Private/Religious Schools

Brehm Preparatory School	1	49	82	(ages 11-22)
Trinity Parochial School	1	N/A	126	K-12
Carbondale New School (Private)	1	9	44	pre K-8

Collegiate Level:

John A. Logan Community College	1	118	3,433	2yr. Full time
			293	Continuing Ed)
Southern Illinois University- Carbondale	1	1,354	17,292	BA/MA/PHD

Southern Illinois Collegiate Common Market (SICCM)

(Comprised of (7) Southern Illinois Colleges-John A. Logan, Kaskaskia, Rend Lake, Shawnee Community, Southeastern Illinois and SIU (Carbondale & Edwardsville), offering Five (5) Technology Programs)

1 14 102 2Yr/Licensed Certificate

Southern Illinois University Carbondale is a public research university that includes 11 colleges and offers 101 bachelor degree programs, 74 master programs and 32 doctoral/medicine/law programs. The Carnegie Foundation for the Advancement of Teaching classifies SIUC as a Research University: High Research Activity. The National Science Foundation ranks SIUC #101 among public universities in the U.S. for total research and development expenditures, and #142 among all U.S. universities. This places SIUC among the top 5 percent of U.S. higher education institutions for research.

SIU-C offers nationally ranked programs including:

Ranked top 5% of all U.S. higher education institutions for research
 #43 in game design for 2017 ranking by Princeton Review
 #72 2018 Best Education Schools ranking by US News and World Report
 Earned national recognition for its economic development work
 Selected by Military Times magazine for being "Best for Vets: Colleges 2017"
 Top 10 Best Online Schools and Resources for Students with Disabilities

Carbondale Community Profile

Being a great place to live also means being a great place to work. A thriving economy helps the tax base (so there's more money for city improvements) and helps a city attract and retain talent. The economy in Carbondale is led by Southern Illinois University and followed by the Physicians industry, which accounts for the percentage of the jobs in the area. Other top employment sectors include Construction, Supermarkets and Other Grocery, Corporate, Subsidiary and Regional Managing Offices.

MAJOR AREA EMPLOYERS	Product/Service	Employees
Southern Illinois University	Higher Education/Research	6,197
Memorial Hospital of Carbondale	Medical	1,254
SIH System Offices	Medical/Business	621
Neuro Restorative	Head Injury Rehabilitation	417
SIH Medical Group	Medical	335
Illinois Department of Transportation	Highway Regional Office	294
Wal-Mart Supercenter	Retail /Food	288
Carbondale School Employees (K-12)	Education/Service	283
City of Carbondale	Local Municipality	265
Brehm Preparatory School	Education – Special Needs	200
University Mall (Corporate & Tenants)	Retail / Food	185
Com-pac Inc.	Medical/Specialty Plastic Bags MFG.	180
Kroger	Grocery	153
Lowe's of Carbondale	Retail	150
Center for Medical Arts	Medical Clinic	117
E.T. Simmonds	Concrete/Construction	100
Schnucks	Grocery	98
Centerstone	Medical Rehab	83
Southern Illinoisan	Regional Newspaper Publishing	65
U.S. Postal Service	Government	53

RETAIL SHOPPING

- University Mall, an enclosed shopping center (677,000 sq. ft.) with anchors: J.C. Penny, Macy's, Ulta, Ross Dress for Less, Bed Bath and Beyond and AMC Theaters an 8 Screen Complex
- Murdale Shopping Center (87,600 sq. ft.) with anchors: Neighborhood Food Co-op and Tru-Value
- University Place, an open-air center (250,000 square feet) with anchors: Dick's Sporting Goods, Best Buy, Petco, AMC Theatre an 8 Screen Complex, TJ Maxx, Party City,
- Eastgate Shopping Center with anchors: Ashley Furniture
- Central Business district
- West Park Plaza, (55,332sq.ft.) with anchors of Gold's Gym and Sherwin Williams Paint

EATING ESTABLISHMENTS

Carbondale has a diverse selection of dining options ranging from Upscale to fast food. There are a wide variety of ethnic foods available.

Number of restaurants: 146

AWARDS

Selected as "Best Small City in Illinois," 1990, 1997
 Winner, "Governor's Hometown Award," 1991, 1992, 2009
 Winner, "GFOA Distinguished Budget Presentation Award," since 1986
 Selected as "Tree City USA," since 1981
 All-America City Finalist, 2009
 City Livability Award, 2009
 Finalist, Award for Municipal Excellence, 2009
 Transparency in Government Award, 2010, 2011, 2012, 2013, 2014
 Ameren Progressive City Award, 2012
 League of American Bicyclists award Civic Center/City Hall Bronze level for Bicycle Friendly Business, 2017
 League of American Bicyclists award Carbondale Bronze level for Bicycle Friendly Community, 2016
 Ranked #4, "40 Best Commuter Cities in Illinois", 2015

Carbondale Community Profile

FACILITIES

8 - Banks
5 - Local Radio Stations
225 - Cable TV channels
900 - Seating cap. of Largest Banquet Rooms
9 - Hotel/Motels w/100 or less rooms each
2 - Taxi Companies
2 - Movie Theatres
8,262 - Total number of rental units
17 - Trailer Parks

DEVELOPMENT SOURCES

City of Carbondale Economic Development
Jackson County Growth Alliance
Southern Illinois Research Business Incubator
Carbondale Chamber of Commerce
Carbondale Main Street
Carbondale Tourism

NEWSPAPERS

1 Local Daily Newspaper
1 Local Weekly Newspaper
1 Daily University Newspaper

TRANSPORTATION

Rail Service – Freight

Canadian National – New Orleans, Memphis Chicago, Canada

Carbondale has a train car maintenance facility and the distance to the nearest piggyback service is 10 miles
Frequency of Switching: As Needed

Rail Service – Passenger

Amtrak City of New Orleans - Chicago, Champaign, Carbondale, Memphis, New Orleans
Amtrak Illini - Chicago, Champaign, Carbondale
Amtrak Saluki - Chicago, Champaign, Carbondale

Air Service

Southern Illinois Airport

Type of runway: hard surface
Length of runway: 6,500 feet
Unicom radio: 122.95
Instrument landing system, VOR, Non-directional beacon

Williamson County Airport

Located 10 miles east of Carbondale at Illinois Route 13 & Illinois Route 148

RECREATIONAL FACILITIES

8 - Public Golf course (within 15 miles)
3 - Public tennis courts
2 - Country Clubs
2 - Recreation Center/Park District
7 - Public parks
1 - State Park (Giant City)
1 - Siu-C Touch of Nature Environmental & Research Center
1 - National Forest (Shawnee)
2 - Wildlife Refuge (Crab Orchard, Touch of Nature)
2 - Reservoirs; Evergreen Terrace (old), Cedar Lake (new)
2 - Public swimming pool
1 - Outdoor Spray Park
1 - Outdoor Splash Park
1 - Shawnee Wine Trail (11 -Wineries)
Public access to lakes and rivers for:
Swimming, water skiing, fishing, & boating

LIBRARIES , MUSEUMS and ARTS

1 Public Library
1 Morris (Southern Illinois University)
African American Museum
Science Center
Siu University Museum
Stage Company
McLeod Theatre
Shryock Auditorium

Motor Carrier

Greyhound Bus Lines
West Bus Service (Charters)
Distance to nearest interstate interchange: 12 miles
Number of local terminals: 2
Number of carriers: 6
(Includes intra and interstate carriers)

Highways

Highways Serving Community:
- U.S. Route 51 and Illinois Route 13
Interstates Serving Community:
- I-57, I-24, I-64
Nearest Interchange: 12 miles / 19 km

Carbondale Community Profile

Carbondale's Cedar Lake was constructed for the purpose of supplying tap water to the residents of Carbondale. In addition, the lake serves fishing, swimming and active recreation purposes.



Carbondale was named by Outdoor Life magazine as one of the top 200 towns for sportsmen and is home to one of Southern Illinois' most beautiful recreational facilities --- Cedar Lake.

Carbondale is proud to border the **Shawnee National Forest** which encompasses more than 270,000 acres in Southern Illinois and is home to outstanding natural areas which offer numerous outdoor experiences. Bordered on the east and west by the Ohio and Mississippi Rivers, the Shawnee National Forest flourishes with vegetation, wildlife, and recreational opportunities.

In the summer of 1995, the owners of the first three wineries in Southern Illinois, recognized that their wineries had untapped tourism potential. With this in mind and a lot of work the Shawnee Hills Wine Trail was born. It was the first wine trail in the state of Illinois. 2015 was the 20th Anniversary of the Shawnee Hills Wine Trail. The Shawnee Hills Wine Trail continues to expand and is becoming more difficult to travel the whole trail in one day. Many Bed & Breakfasts have popped up in the area and most are booked solid throughout the year. The Shawnee Hills Wine Trail looks forward to increasing growth and success in the years to come, and is especially proud of the new American Viticultural Area (AVA) designation. This is a very exciting time for wine in the Shawnee Hills of Southern Illinois.

Crab Orchard National Wildlife Refuge's 44,000 acres of land and water contain a wide diversity of flora and fauna. Major habitat types on the refuge include hardwood forest, agricultural land, grazing units, brushland, wetlands, and lakes. The refuge provides significant resting areas for migratory birds utilizing the Mississippi Flyway. Wintering numbers of Canada Geese can peak at 200,000. A total of 700 plant species, 245 bird species, 33 mammal species, 63 fish species, and 44 reptile and amphibian species have been documented on the refuge. The western 24,000 acres of the refuge provide a wide range of recreational opportunities and also includes a 4,050-acre wilderness area. The eastern 20,000 acres is a wildlife sanctuary and public use is limited.

Southern Illinois University **Student Recreation Center** offers swimming and sports facilities, intramurals, sport clubs, group fitness programs, outdoor equipment rental, and much more for students and members. The Student Recreation Center also has facilities for meetings and events.

Touch of Nature Environmental Center is Southern Illinois University's outdoor education and recreation center serving SIU, the region and the nation as an outdoor laboratory for experiential learning, a field site for research, and a provider of therapeutic recreation, environmental education, adventure education, personal and interpersonal growth experiences and facilities services.

The **Carbondale Park District** offers a wide variety of programs to fit the needs of the community. The Park District serves a diverse population with a wide range of interests. Our programs and services serve infants, preschoolers, youths, teens, adults and seniors, as well as family interests. The Park District offers special events, instructional lessons, free programs and leisure services.

Carbondale Community Profile

Carbondale Achievements for Fiscal Year 2017....

CARBONDALE — WalletHub, the personal-finance website, recently conducted an in-depth analysis of 2017's best small cities in which to start a business, and ranked Carbondale second in the United States, according to a news release from the website.

Carbondale ranked first in labor costs and average growth in number of small businesses.

The survey, conducted in advance of this year's National Small Business Week (April 30-May 6), analyzed more than 1,200 small-sized cities nationwide, across 16 key metrics, to determine their business-friendliness. Business environment, access to resources and business costs all played heavily in the rankings, and Carbondale's access to resources pulled it into the No. 2 slot.

While every small city offers advantages and disadvantages to entrepreneurs, lower labor costs and access to financing can make a huge impact on the growth of a new business, according to WalletHub. Carbondale checked both those boxes and in addition, garnered a 19th place spot for financing accessibility.